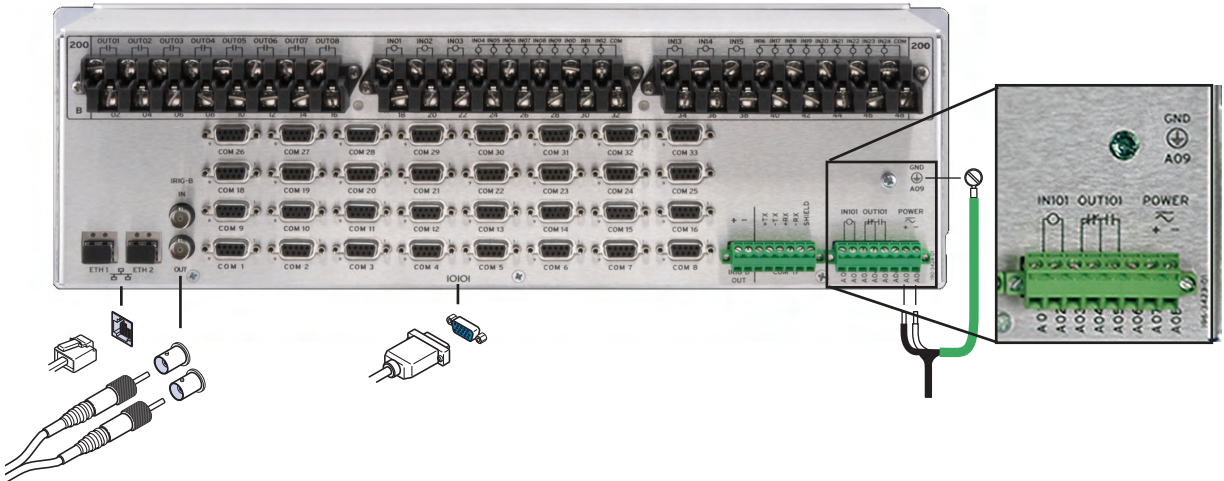




Getting Started With RTAC

Apply Power



Input voltage rating:

100–275 Vdc or 88–264 Vac

38.4–137.5 Vdc or 88–132 Vac

A07 = + or line

A08 = – or neutral

A09 = ground

Install Software

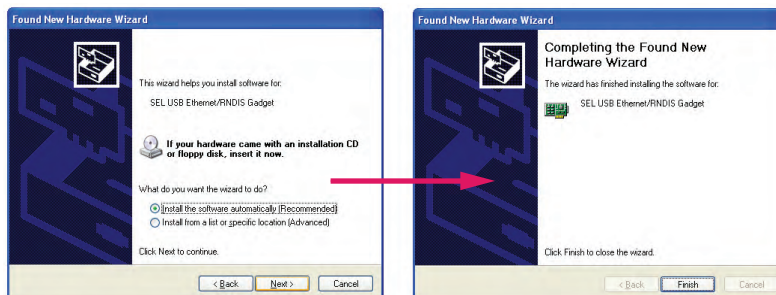
Insert the ACCELERATOR RTAC™ software disk in your computer. If you have enabled autorun, a web page will open automatically. If the page does not start, double-click **setup.bat** on the CD to start the page manually. Begin the software installation by selecting the link ACCELERATOR RTAC SEL-5033 software under the Software heading. Follow the prompts to complete software installation.

Connect USB

Use the included USB cable to connect your computer to the type-B USB port on the front of the RTAC.



Follow the prompts to install the USB driver. The USB driver provides an Ethernet connection to the RTAC.

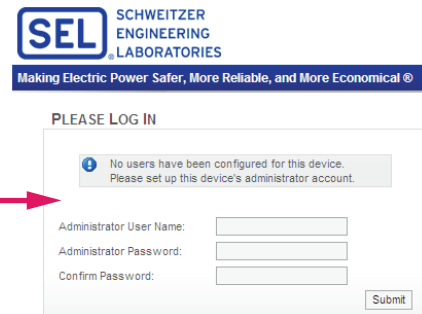
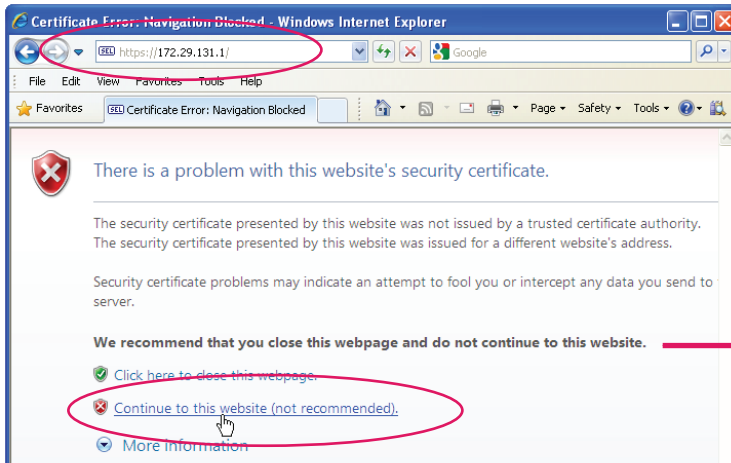


Connect to the Web Interface

In Internet Explorer, type the USB default IP address <https://172.29.131.1> to access the secure RTAC web interface.

Step 1. Accept the default security certificate for first time use.

Step 2. Create an account: First time logon will create an administrator account. Enter a user name. Password must be at least eight characters and contain at least one of each: A–Z, a–z, 0–9, special character (!, @, #, etc.).



Step 3. Press Submit to generate the account.

Step 4. Log on to the RTAC with the user account you just created.


From the RTAC's secure web interface, you can create new user accounts and change Ethernet interface settings.

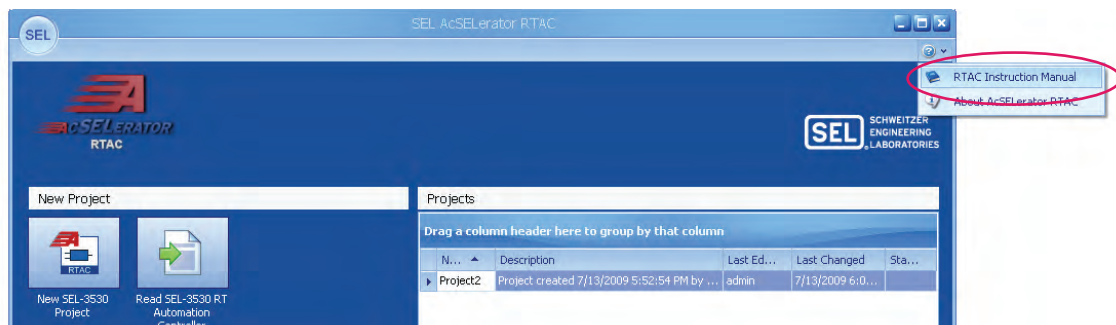


Start a Project

Step 1. Double-click the ACSELERATOR RTAC icon  on your desktop.

Step 2. Log on with default user name (admin) and password (TAIL).

Step 3. Click on  to find the RTAC instruction manual to learn how to create, download, and use RTAC automation projects.



For Additional Technical Assistance Call +1.509.332.1890

