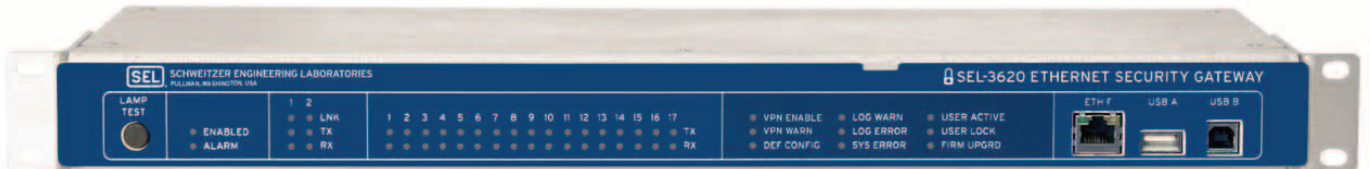




SEL-3620 Ethernet Security Gateway

Secure Your Site-to-Site Ethernet Communications, and Protect Your Private Networks



Features and Benefits

■ Ethernet Security Gateway

Interoperate with existing IT and control systems with vetted Internet Protocol Security (IPsec) and syslog protocols. Manage status and configuration with an intuitive, menu-driven web interface.

■ Protocol and Data Security

Secure routable protocols and data that cross an electronic security perimeter. The Ethernet security gateway provides up to 16 virtual private network (VPN) connections on three Ethernet ports.

■ Substation Firewall

Secure your private network from malicious traffic with a configurable ingress and egress stateful firewall.

■ Serial Network Protection

Use IPsec to encrypt and authenticate TCP/IP data over serial lines (e.g., those found on leased lines between network nodes) with Serial Line Internet Protocol (SLIP) connections.

■ Event Logs and Time Tagging

Centralize logging with syslog protocol. Access up to 60,000 security event reports with the syslog protocol, and apply an IRIG-B clock to synchronize the internal clock for precise time tagging of events.

■ Industry-Vetted Security and Interoperability

- IPsec (RFC 4301, 4302, 4303) creates a secure VPN.
- X.509 certificates ensure strong authentication for incoming connection requests.
- OCSP certificate revocation operates with standard certificate servers to centrally revoke certificates and prevents unwanted connections.
- IRIG-B time synchronization receives and distributes IRIG-B signal to maintain time synchronization.
- HTTPS web interface allows convenient, secure setup and management, and eliminates the need for extra PC software.
- Cisco:OPSAID interoperability facilitates communication with Cisco routers and OPSAID-compliant devices.
- Syslog logs events for consistency and compatibility, and enables centralized collection.



Heat
(+85°C)



SEL
Secure



Cold
(-40°C)

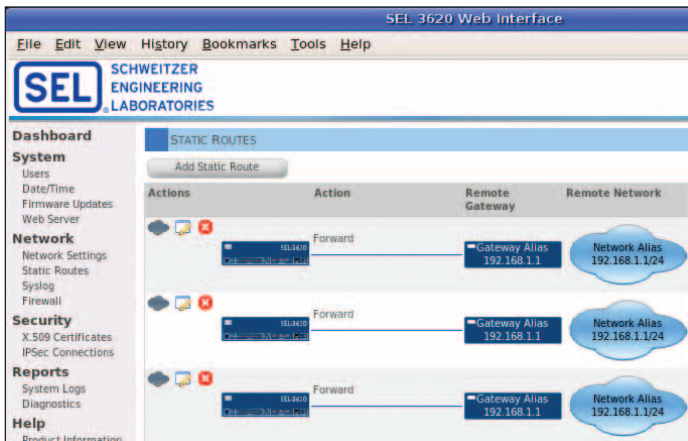
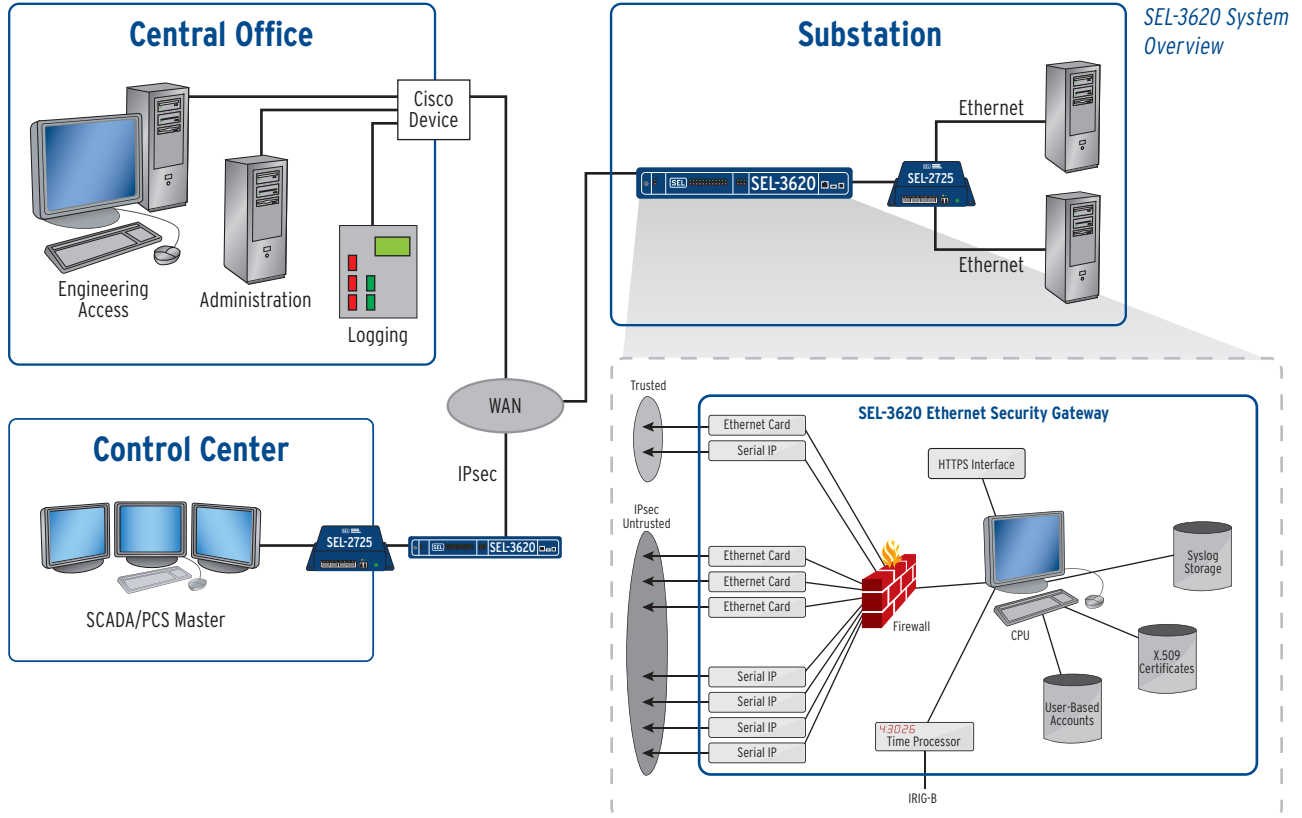
Making Electric Power Safer, More Reliable, and More Economical®

SEL-3620 Ethernet Security Gateway

Application

Centrally Revoke Access With the Open Standard Online Certificate Status Protocol (OCSP)

The SEL-3620 receives and logs a connection request and polls the OCSP server to verify that the X.509 certificate is valid or invalid. If the Ethernet security gateway receives an invalid status for the certificate, it denies the remote user the connection request.



Easy-to-use and intuitive secure web interface reduces the time to set up and operate a security gateway.

Price

Budgetary Retail, Quantity 1: SEL-3620 \$2,800



Pullman, Washington USA
Tel: +1.509.332.1890 • Fax: +1.509.332.7990 • www.selinc.com • info@selinc.com

© 2009 by Schweitzer Engineering Laboratories, Inc. PF00197 • 20091116

