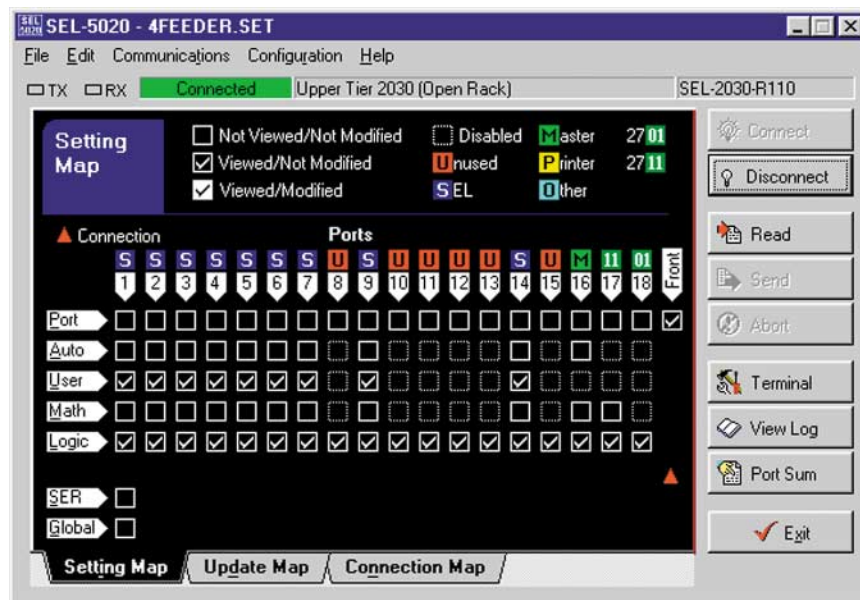




## SEL-5020 Settings Assistant Software

# Manage Settings for SEL-2032/2030/ 2020 Communications Processors and SEL-2701 Ethernet Processor



*Use Windows® Graphical User Interface to Manage Settings*

### Major Features and Benefits

- **Create Settings for SEL-2032/2030/2020 Communications Processors**  
Use the SEL-5020 to create and edit settings with a graphical user interface. Save and retrieve settings using your PC. You can create the settings at your desk without having a communications processor connected. String and expression builders help you create the settings to implement automation and data acquisition schemes.
- **Communicate With SEL-2032/2030/2020**  
Establish connections through serial data links to read settings from a communications processor or to send settings.
- **Use Ethernet Option for SEL-2701 Ethernet Processor Settings and Ethernet Communications**  
Order the optional Ethernet version of the SEL-5020 to create, edit, upload, and download the settings for the SEL-2701 Ethernet Processor. Connect your PC to an Ethernet network that communicates with SEL-2701-equipped communications processors, and use the Ethernet to transfer settings.

***Making Electric Power Safer, More Reliable, and More Economical™***

# SEL-5020

## Settings Assistant Software

### Functional Overview

**The SEL-5020 helps you navigate through your communications, data acquisition, and automation settings.**

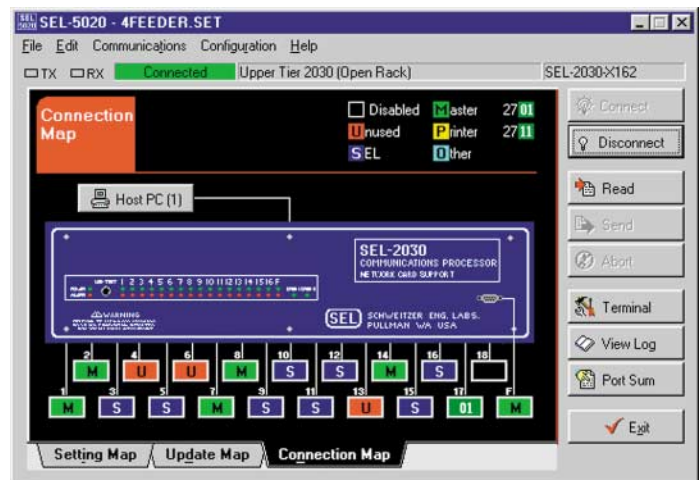
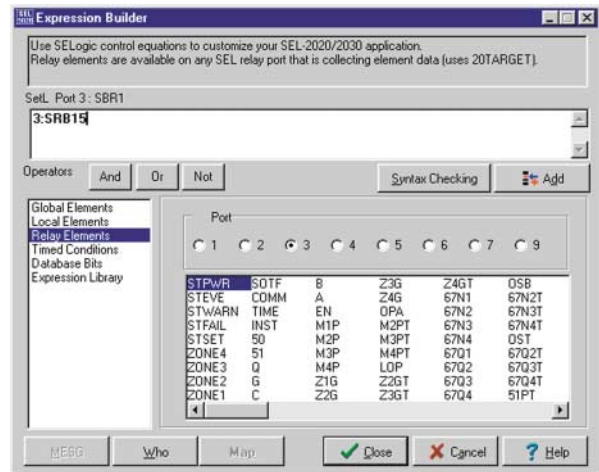
- Create SEL-2032/2030/2020 settings at your desk without any devices attached.
- Save and retrieve settings from disk.
- Create complex strings and SELogic® control equations using string and expression builders.
- Read SEL-2032/2030/2020 settings into the SEL-5020.
- Send settings from the SEL-5020 to the SEL-2032/2030/2020 with or without relays attached.
- Connect to lower-tier communications processors with the click of a button.
- With Ethernet option:
  - Save and retrieve Ethernet/UCA settings for the SEL-2701 Ethernet Processor
  - Communicate using PC Ethernet controller

### General Specifications

- Personal computer with a Pentium® processor
- Windows 95 or 98 w/32 MB RAM or Windows NT® or 2000 w/64 MB RAM
- 16550 compatible EIA-232 serial port
- 5 MB available disk space
- Mouse or compatible pointing device
- Ethernet controller card and network (Ethernet option)

### Commitment to Quality

Schweitzer Engineering Laboratories, Inc. is committed to quality. Our certification to the ISO 9001 quality standard and our ten-year product warranty are examples of this commitment. We encourage and appreciate your feedback, and we will use this information to continually improve our products and services.



### Contact Us

SEL sales representatives are prepared to assist you. Contact your nearest sales representative, application engineer, or customer service representative at (509) 332-1890. Visit our website at [www.selinc.com](http://www.selinc.com) for more information.

Copyright © SEL 1996, 2001, 2002, 2003 (All rights reserved). Printed in USA. All trademarks are the property of their respective holders. 5020fltr 20030425 • PF000003



**SCHWEITZER  
ENGINEERING  
LABORATORIES**

2350 NE Hopkins Court • Pullman, WA 99163-5603 USA  
Phone: (509) 332-1890 • Fax: (509) 332-7990 • FaxBack: (509) 334-8293  
Internet: [www.selinc.com](http://www.selinc.com) • E-mail: [info@selinc.com](mailto:info@selinc.com)

**Making Electric Power Safer, More Reliable, and More Economical**