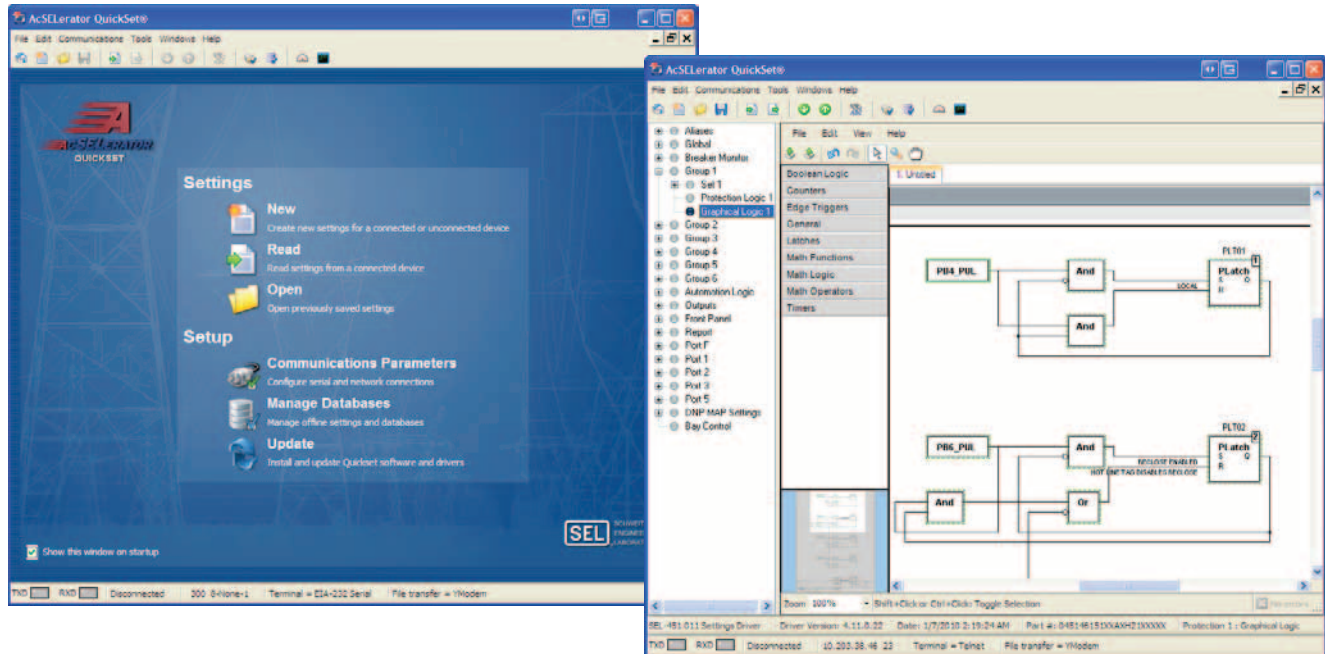


SEL ACSELERATOR® Software



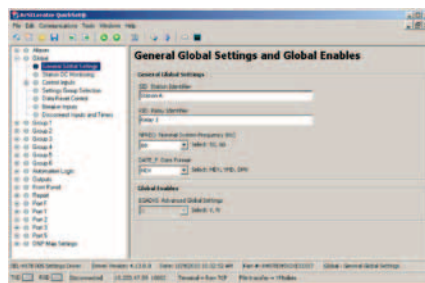
QuickSet® and QuickSet Designer®

Design and Set Your System



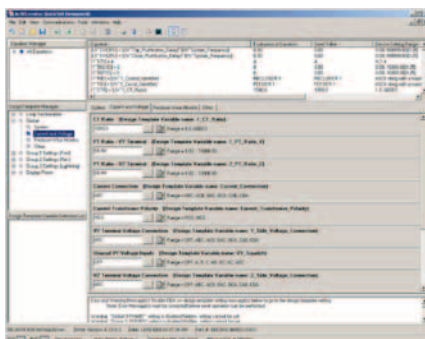
ACSELERATOR QuickSet® SEL-5030 Software

Create and edit settings, view graphical logic and templates, and access other tools.



ACSELERATOR QuickSet Designer® SEL-5031 Software

Create and edit graphical logic and QuickSet Designer templates.



Features and Benefits

Offline settings with rule checking improve efficiency

Begin settings development and validation prior to receiving the device by using offline settings.

Graphical logic simplifies design

Create your logic using standard logic symbols, and then print the resultant logic diagram as your project documentation.

Templates hide undesired features

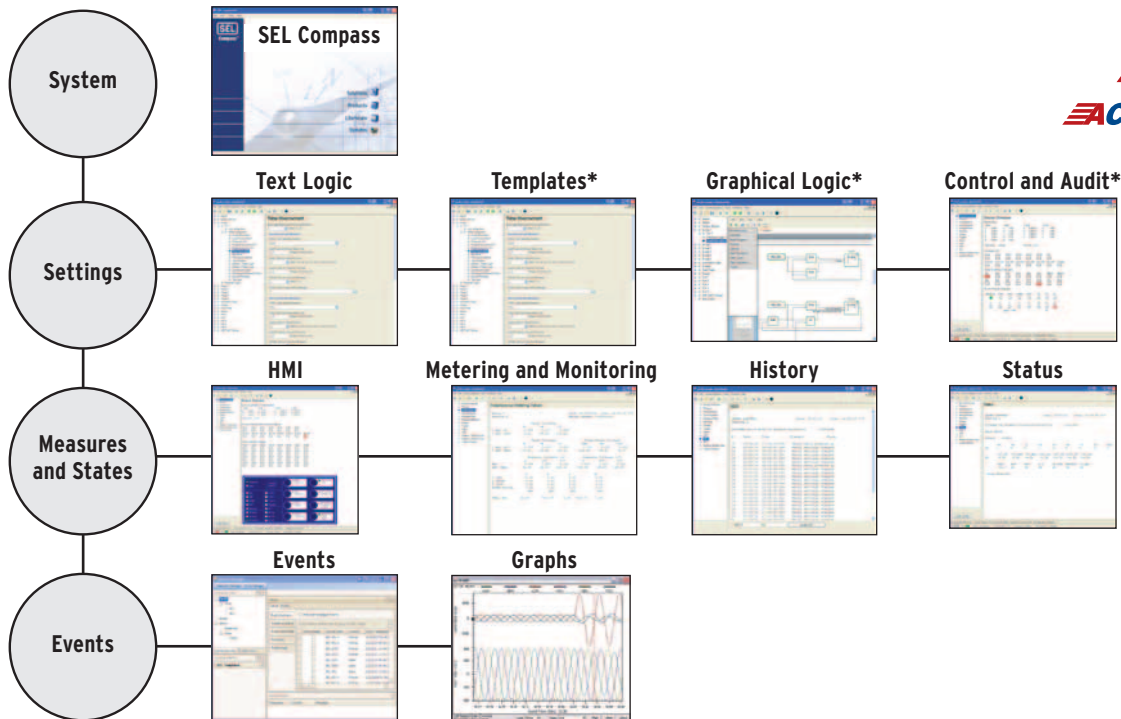
Use QuickSet Designer to develop templates that help implement your standards in QuickSet for a consistent and reliable interface customized for your needs.

Flexible architecture enables addition of new features

Many new features have been added recently, and many more are coming as a result of our modular architecture.

Making Electric Power Safer, More Reliable, and More Economical®

Functional Overview



Flexible Architecture

Every year as we add new capabilities to QuickSet, we re-architect and re-factor areas of the application to make it more maintainable and better able to support new features and improved performance.

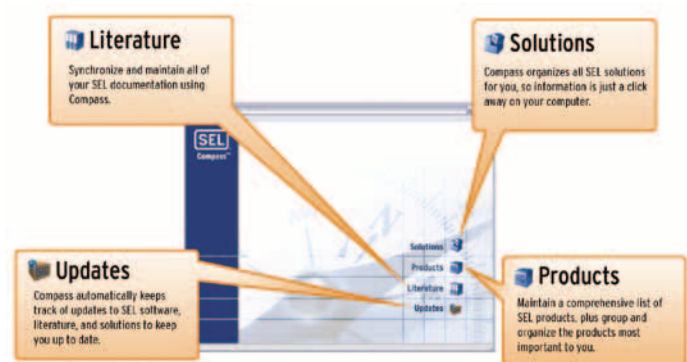
At the same time we have kept QuickSet free! We also plan to continue improving the usability and capability of QuickSet. Advanced features are available in QuickSet Designer for an additional cost per user with no hidden licensing or maintenance fees!

Other Tools

- Firmware Loader—Upgrade or downgrade firmware while maintaining settings.
- Transformer Commissioning Assistant—Verify your winding and current transformer differential protection settings.
- Motor Start Report—Verify proper motor operation.
- Chart Viewer—Quickly graph load profile or other data.
- Event Tool for Performance Analysis
 - Analyze fault records and device element response quickly.
 - Convert relay event reports to oscillography with time-coordinated element assertion and phasor/sequence element diagrams.
- HMI Tool for Device Visualization—Visually verify data while commissioning.

SEL Compass® Software

SEL Compass offers a visual, highly intuitive interface for easy notification of product updates as well as downloads and sharing of the many products and information that SEL provides. It combines a local database with the ability to download new product updates, literature, and marketing materials according to your selections. It allows you to update when you want, automatically, and on demand. Even install new device-setting drivers directly from the web.



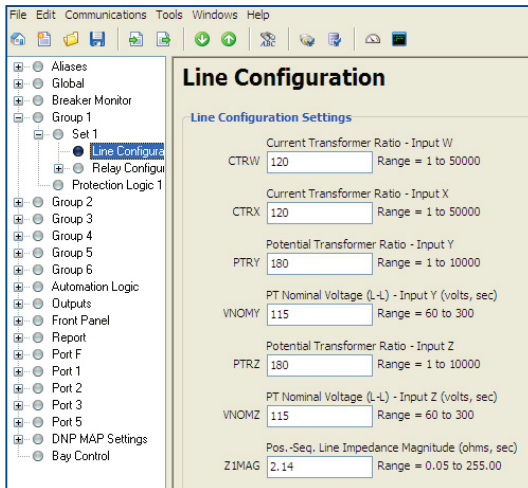
Offline Settings

Create your settings offline

- Create and modify settings offline (no communications connection) with confidence, since QuickSet verifies whether the settings are valid.
- Multiple device families, models, and versions are supported to help ensure appropriate settings validation.

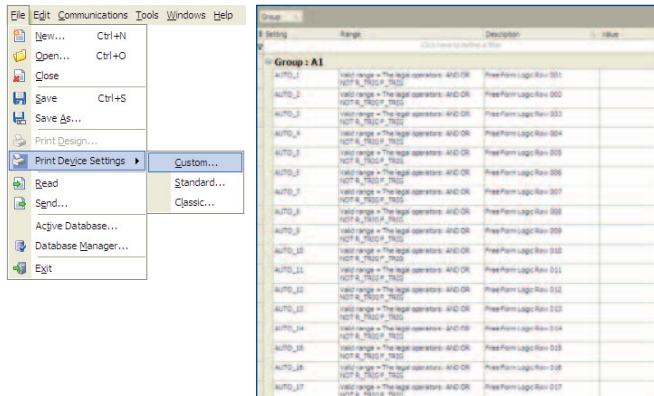
Make your settings

- Each setting is clearly identified with a label, description, and settings range to simplify the settings process.
- Related settings are grouped together on a form, and subgroups are clearly identified.
- Interrelated settings are automatically checked and highlighted for out-of-range conditions.



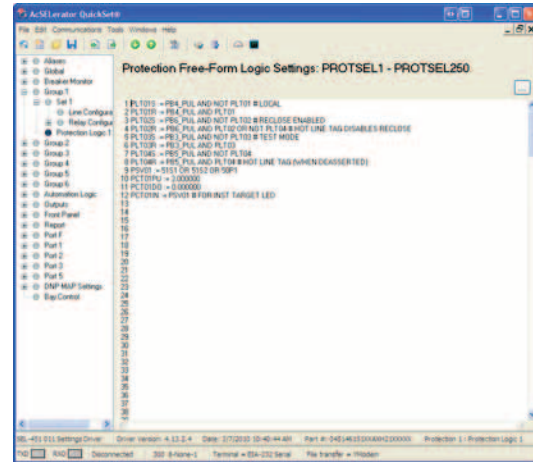
Efficiently manage your settings

- Create, read, modify, and write settings across your entire system.
- Associate user comments with device settings.
- Easily import, export, or convert settings.
- Share settings information across your entire organization.
- Compare settings offline or online with acSELEATOR QuickSet.
- Generate customized settings reports to design, save, and export settings exactly how you want.



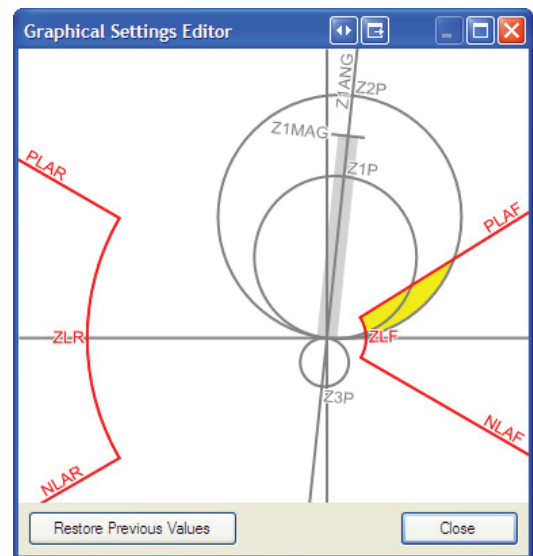
Implement your logic

- Easily move, cut, copy, and paste free-form logic equations, and replicate them across multiple devices, reducing setup times.
- Develop programmable logic equations with easy-to-use tools.
- Define communications between your PC and all of your devices.



Make changes with graphical editors

See changes as you make them, rather than relying on a traditional numerical input, with graphical editors such as the graphical load-encroachment editor.



QuickSet Designer Graphical Logic Editor (GLE)

Simplify device logic configuration

- Design new SELogic® control equations.
- Save diagrams with QuickSet settings.
- Navigate with diagram navigation tool.
- Copy meta files to clipboard.
- Organize with drag and drop support.
- Create and manage fully supported element palette.
- Create function block diagrams.

SEL-400 series graphical logic

Simplify the process of configuring your SEL-400 Series devices with the new graphical logic editor in QuickSet Designer. Design your SELogic with drag and drop ease of use allowing your settings files to be documented.

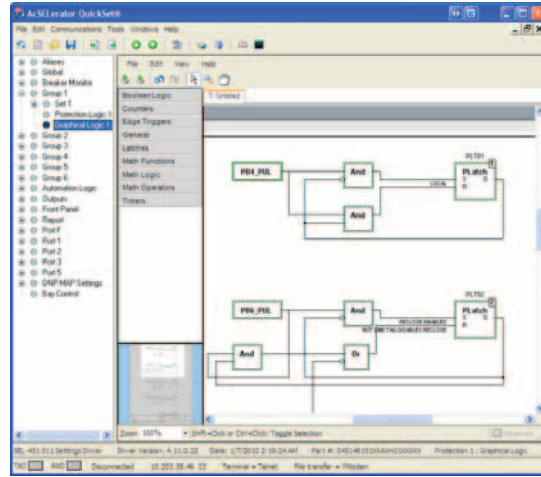
- Converts existing SELogic.
- Saves diagrams with QuickSet settings.
- Produces automatic layouts.
- Fully supports drag and drop functions.
- Features full element palette.
- Supports aliases and comments.

Create graphic and text logic

- Decompile settings directly to graphical logic.
- Compile logic directly to device logic.

Create design documentation

- Print logic diagrams with drawing outlines to complete your design documentation.



QuickSet Designer Templates

Create your own settings interface

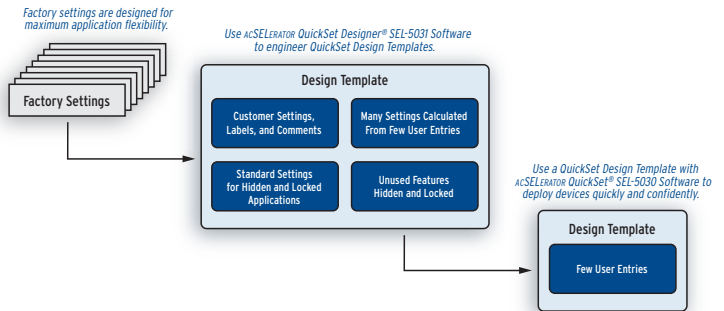
Create a custom user interface for your settings, called QuickSet Design Templates, to lock settings to your standards or to lock and hide unused settings. This simplifies new installations and helps assure that new devices are applied according to your organization's standards.

Store templates on your devices

Now you can store templates on your device if you have an SEL-651R, SEL-2411, or any device with template storage support.

Develop and deploy settings in five simple steps

- Design a standard application for an SEL device. Select settings that will be hidden, fixed, calculated, and documented with names and comments.
- Use QuickSet Designer to create, review, and test a QuickSet Design Template for standard SEL device applications.
- Export the template, and deliver it to the technician responsible for SEL equipment deployment.
- Import the template into QuickSet, and create installation settings for each device with a consistent setup.
- Use QuickSet to transfer settings and commission devices.



Reduce settings errors

Protect a Line of Motors or Transformers

To install a new device, personnel enter only nameplate data and the ID. QuickSet then calculates settings from entered data, using protection, integration, and I/O assignment settings predetermined in the template.

Protect and Automate a Feeder Network

Simply enter ID, and load data for each recloser. A template then calculates protection and recloser settings, using standard automatic network reconfiguration and integration settings.

Apply Distance Protection

Create a template that applies standards for distance and load-encroachment settings. Personnel then enter only the ID, line parameters, and load size for each relay.



Pullman, Washington USA
Tel: +1.509.332.1890 • Fax: +1.509.332.7990 • www.selinc.com • info@selinc.com

© 2004–2010 by Schweitzer Engineering Laboratories, Inc. PF00075 • 20100420

