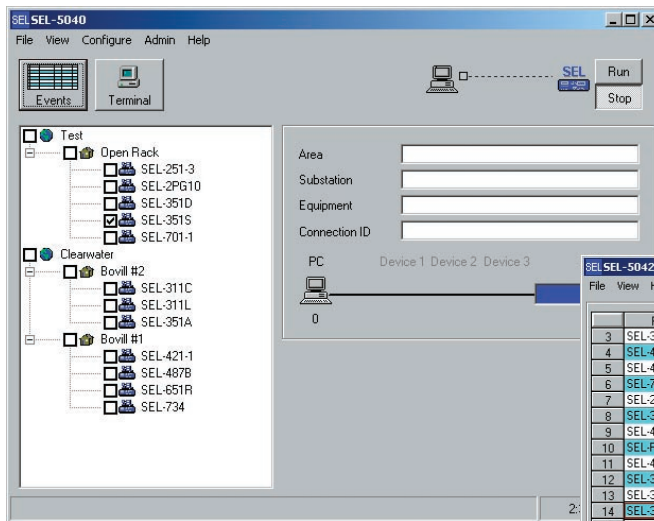
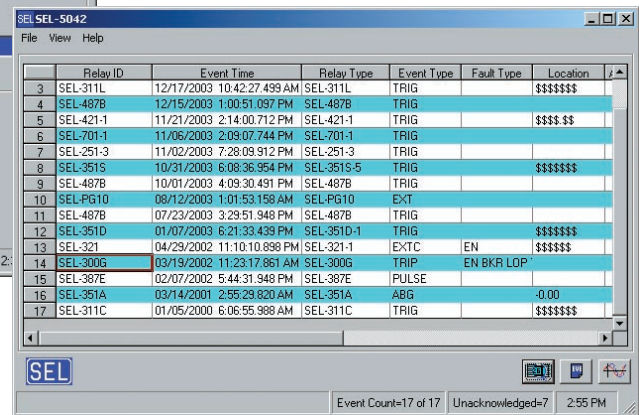




Reduce Time Retrieving Reports and Analyzing System Events



ACSELERATOR Report Server SEL-5040 and ACSELERATOR Report Viewer SEL-5042 included in the ACSELERATOR InSite Software package.



*Never miss an event.
Spend your time analyzing,
not collecting, data.*

Report Server Features and Benefits

- **Saves Time, So You Can Provide Results Sooner**
Automatic report collection saves time, so you can start analyzing earlier. The summary database lets you quickly select the short and long event reports of interest. You can then view and analyze the oscillograms to complete your analysis sooner.
- **Automatically Collects Event Reports**
If you are responsible for outage analysis, outage management, or relay settings coordination, then fault information in relay event reports will help you. The Report Server automatically collects and files event reports, so they are waiting on your computer when you need them.
- **Prevents Accidental Loss of Important Data**
The Report Server automatically collects event reports before they are overwritten by subsequent events. Relays can store several event reports, so all data from a single disturbance are typically captured. Automatic collection by the Report Server prevents loss of these data when another disturbance occurs.

Report Viewer Features and Benefits

- **Distributes Information Efficiently**
Engineers can work in parallel on their assigned events to get results sooner. Each engineer can use the summary database to quickly select their event reports of interest, and view and analyze oscillograms.
- **Provides Convenient Remote Access to Event Data**
From the convenience of a PC, each engineer involved in event report analysis can use Report Viewer for network access to the data collected by the Report Server.
- **Improves Security**
Increase security because only the Report Server communicates with the relays and uses access passwords. Use the Report Viewer to read information from the Report Server files.

acSELERATOR Report Server SEL-5040 Functional Overview

Retrieves, Files, and Indexes Reports

Set the Report Server to poll for reports or automatically listen for report notification. The software retrieves the 1/4-cycle resolution event reports and files them in the specified folder. The software creates a Microsoft® Access database record summarizing each event report. For all SEL relays and controllers, each event record includes the identification, date, and time of the report. For SEL-300 series products, the database event record also includes applicable target, fault location, and fault current values.

Uses Serial or Ethernet Connections to IEDs

Communicate with IEDs through leased lines, dial-up telephone, and other serial links to recognize and retrieve event report data.

Retrieve reports through the Ethernet network interface in the PC. Communicate with SEL-2701 Ethernet Processors, SEL-2890 Ethernet Transceivers, or other Ethernet converters connected to SEL communications processors and relays.

Applies Pre-Set Criteria to Automatically Initiate Action

Set criteria to retrieve a long event report for each event that matches your settings.

Manages Report Acknowledgement and Collection of Select Reports From the Database Summary

Manually initiate retrieval of the corresponding long event report, mark the report as acknowledged, and view or print the report.

Notifies Engineers Automatically

Set the Report Server to automatically send a notification email with an event summary every time an event is collected.

Displays Event Waveforms

Use the built-in Event Waveform Viewer to see reports in graphical form. Or, install the acSELERATOR Analytic Assistant SEL-5601 Software for advanced analysis features, including Alpha Plane displays and simultaneous viewing of multiple synchronized event reports.

Imports Existing Event Information

Use the Report Server's import feature to catalog, summarize, and store collected SEL event reports.

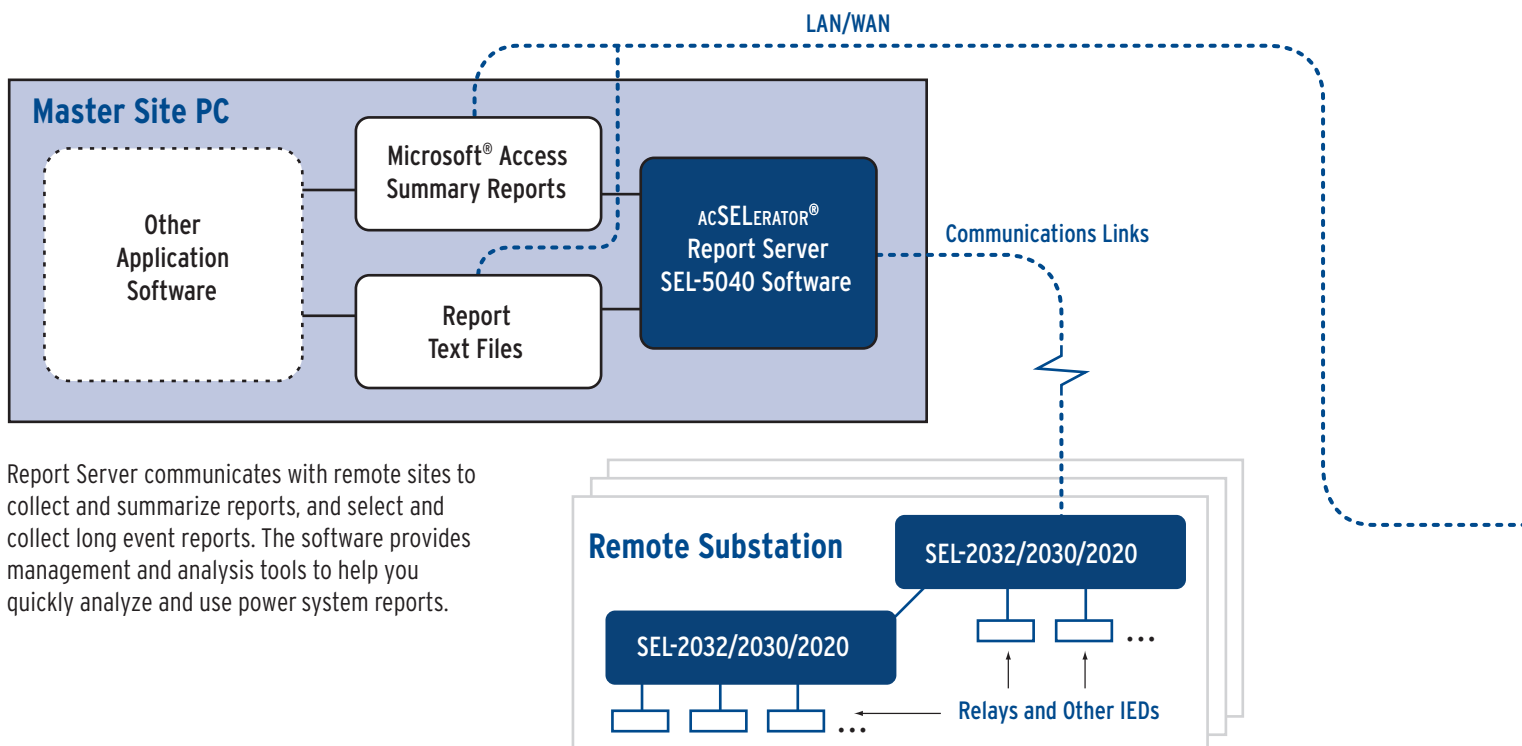
Collects Reports Via Custom Scripts

Configure the Report Server to collect reports other than SEL event reports. For example, you can collect sag/swell reports automatically and store them for future analysis and review. You can also use this feature to collect information from non-SEL devices.

Creates Central Events Database

The Report Server is installed at a master site, communicating remotely with relays and other devices.

acSELERATOR Report Server SEL-5040 Application Summary



Report Server communicates with remote sites to collect and summarize reports, and select and collect long event reports. The software provides management and analysis tools to help you quickly analyze and use power system reports.

ACSELERATOR Report Viewer SEL-5042 Functional Overview

Provides Remote Access to Summary and Event Data

Use the Report Viewer through a network to access the data collected by the Report Server.

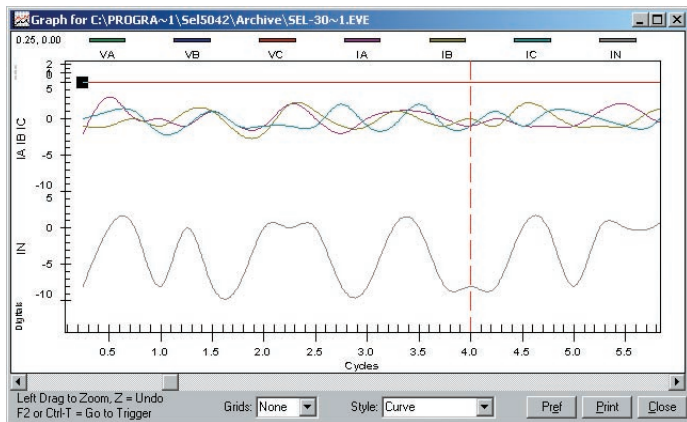
Displays Event Waveforms

Use the built-in Event Waveform Viewer to see reports in graphical form. Or, install the ACSELERATOR Analytic Assistant SEL-5601 Software for advanced analysis features, including Alpha Plane displays and simultaneous viewing of multiple synchronized event reports.

Report Viewer Example Screens

	Relay ID	Event Time	Relay Type	Event Type	Fault Type	Location	
3	SEL-311L	12/17/2003 10:42:27.499 AM	SEL-311L	TRIG		\$\$\$\$\$\$	
4	SEL-487B	12/15/2003 1:00:51.097 PM	SEL-487B	TRIG		\$\$\$\$\$\$	
5	SEL-421-1	11/21/2003 2:14:00.712 PM	SEL-421-1	TRIG		\$\$\$\$\$\$	
6	SEL-701-1	11/06/2003 2:09:07.744 PM	SEL-701-1	TRIG		\$\$\$\$\$\$	
7	SEL-251-3	11/02/2003 7:28:09.912 PM	SEL-251-3	TRIG		\$\$\$\$\$\$	
8	SEL-351S	10/31/2003 6:08:36.954 PM	SEL-351S-5	TRIG		\$\$\$\$\$\$	
9	SEL-487B	10/01/2003 4:09:30.491 PM	SEL-487B	TRIG		\$\$\$\$\$\$	
10	SEL-PG10	08/12/2003 1:01:53.158 AM	SEL-PG10	EXT		\$\$\$\$\$\$	
11	SEL-487B	07/23/2003 3:29:51.948 PM	SEL-487B	TRIG		\$\$\$\$\$\$	
12	SEL-351D	01/07/2003 6:21:33.439 PM	SEL-351D-1	TRIG		\$\$\$\$\$\$	
13	SEL-321	04/29/2002 11:10:10.898 PM	SEL-321-1	EXTC	EN	\$\$\$\$\$\$	
14	SEL-300G	03/19/2002 11:23:17.861 AM	SEL-300G	TRIP	EN BKR LOP		
15	SEL-387E	02/07/2002 5:44:31.948 PM	SEL-387E	PULSE			
16	SEL-351A	03/14/2001 2:55:29.820 AM	SEL-351A	ABG		-0.00	
17	SEL-311C	01/05/2000 6:06:55.988 AM	SEL-311C	TRIG		\$\$\$\$\$\$	

Event Summary lists reports and allows selection of waveform, text, or detail viewing.



Built-in Event Waveform Viewer displays event as oscillogram.



View Event Details for the selected event.



View the selected event text file.



View the selected event as an oscillogram. Uses built-in Event Waveform Viewer or, if installed on same PC, the ACSELERATOR Analytic Assistant.

SEL Event Details

Device Information

Relay ID: SEL-300G

Relay Type: SEL-300G

Event Information

Date/Time: 3/19/2002 11:23:17.861 AM

Event Type: TRIP

Frequency: 60

Targets: EN BKR LOP TRIP 27/59

Analogs

IA: 11, IB: 9, IC: 11, IQ: 13, IG: 29, IN: 8

Reports

1/4 Cycle Event Path: \Archive\SEL-300G 2002 03 19 11 23 17 861.eve

Long Event Path: [Empty]

Collect Long ER: [Checked]

Close

Event Details provide more information about each summarized event report.

ACSELERATOR Report Viewer SEL-5042 Application Summary

Engineer's Desktop or Laptop PC

ACSELERATOR
Report Viewer
SEL-5042 Software

Install the Report Viewer on each engineer's desktop or laptop PC. Each can access the database through a network to view and analyze event reports.

Remote PC Linked Via VPN

ACSELERATOR
Report Viewer
SEL-5042 Software

LAN/WAN

acSELERATOR Report Server and Viewer Software

acSELERATOR Report Server Options

Serial and Ethernet Device Communication

The Report Server can use EIA-232 serial links to communicate with relays and communications processors. Or use an Ethernet connection with a network interface card in the PC to communicate with SEL-2701 Ethernet Processors, SEL-2890 Ethernet Transceivers, and other Ethernet converters connected to communications processors and relays.

SEL InSite Package

The InSite package includes:

- 1 acSELERATOR Report Server SEL-5040 Enterprise Single-Seat License
- 1 acSELERATOR Analytic Assistant SEL-5601 Single-Seat License
- Unlimited acSELERATOR Report Viewer SEL-5042 Seat Licenses

You can purchase additional licenses for the acSELERATOR Analytic Assistant to use with each acSELERATOR Report Viewer.

Bundled With SEL Substation Computers

A special substation license is available as an ordering option for the SEL-3351 System Computing Platform with Windows® XP Professional, to gather reports at a local site.

General Specifications

- Windows 98, Windows NT®, Windows 2000, or Windows XP
- CD-ROM drive
- 20 MB available disk space
- Mouse or compatible pointing device
- Ethernet network interface
- LAN/WAN connection (for viewer access)
- Microsoft Access for custom database reports recommended

Upgrade Subscriptions

An upgrade subscription entitles you to all new versions of the software for the term of your upgrade subscription. Minor and major software upgrades are included. As SEL adds new features, we will automatically send the new software to subscribers. Renew your annual upgrade subscription for uninterrupted updates, the lowest price, and the highest level of SEL product support.

Commitment to Quality

Schweitzer Engineering Laboratories, Inc. is committed to quality. Our certification to the ISO 9001 quality standard and our worldwide, ten-year product warranty are examples of this commitment. We encourage and appreciate your feedback about the use of SEL equipment, and we will use this information to continually improve our products and services.



© 2000, 2002, 2004, 2005 by Schweitzer Engineering Laboratories, Inc. All rights reserved. All brand or product names appearing in this document are the trademark or registered trademark of their respective holders. No SEL trademarks may be used without written permission. SEL products appearing in this document may be covered by US and Foreign patents. PF00040 • 20051027



2350 NE Hopkins Court • Pullman, WA 99163-5603 USA
Tel: 509.332.1890 • Fax: 509.332.7990 • Email: info@selinc.com
www.selinc.com • www.selindustrial.com

Making Electric Power Safer, More Reliable, and More Economical®