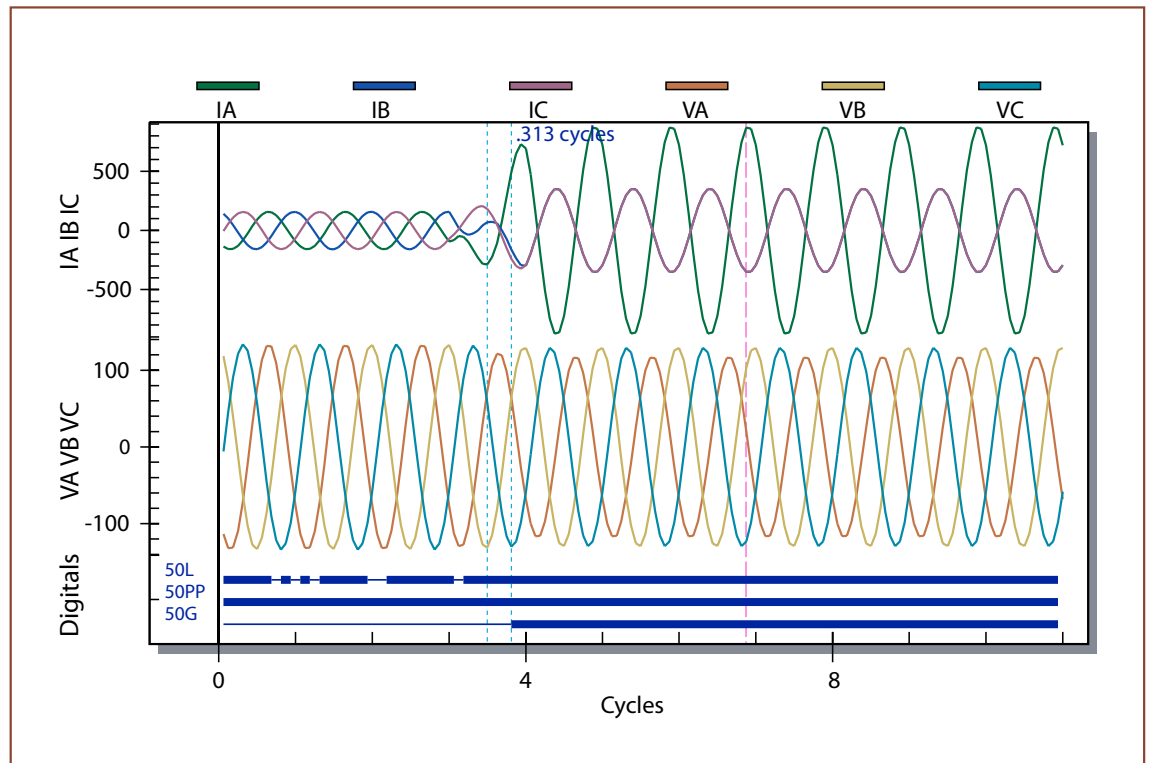




# Quickly and Easily Analyze Event Reports



*Display Oscillograms and Vector Diagrams to Accelerate Event Report Analysis*

## Major Features and Benefits

### ■ Display Event Report Oscillograms

View each report as a plot of magnitude versus time. Select analog and digital points to build a custom display.

### ■ Display Phase and Symmetrical Component Phasors

Display the phasor view of electrical data, to better understand asymmetrical three-phase faults. Build a custom plot using per-phase and symmetrical component sequence currents and voltages.

### ■ Use Multiple File Formats

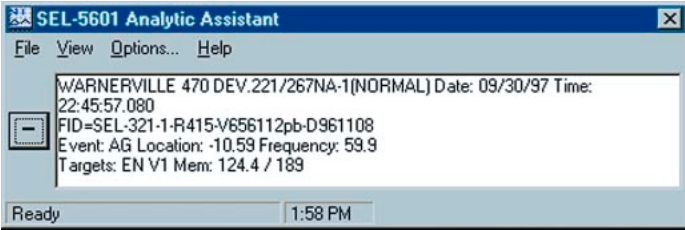
Select input files with SEL Compressed ASCII (CEV), ASCII COMTRADE (91 or 99), or SEL-200 series ASCII (EVE) formats. Export ASCII COMTRADE files.

***Making Electric Power Safer, More Reliable, and More Economical***

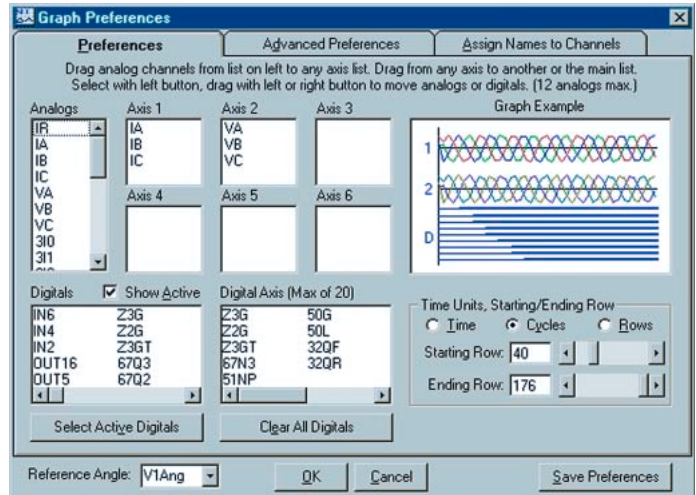
# SEL-5601 Analytic Assistant Software

## Product Description

The SEL-5601 Analytic Assistant accepts SEL compressed ASCII relay event reports and COMTRADE files. You can view the records graphically, as oscillography with time-coordinated element assertion, or as phase and sequence phasors with manual or automatic advance. You can also view SEL relay settings and assign names to both analog and digital channels.

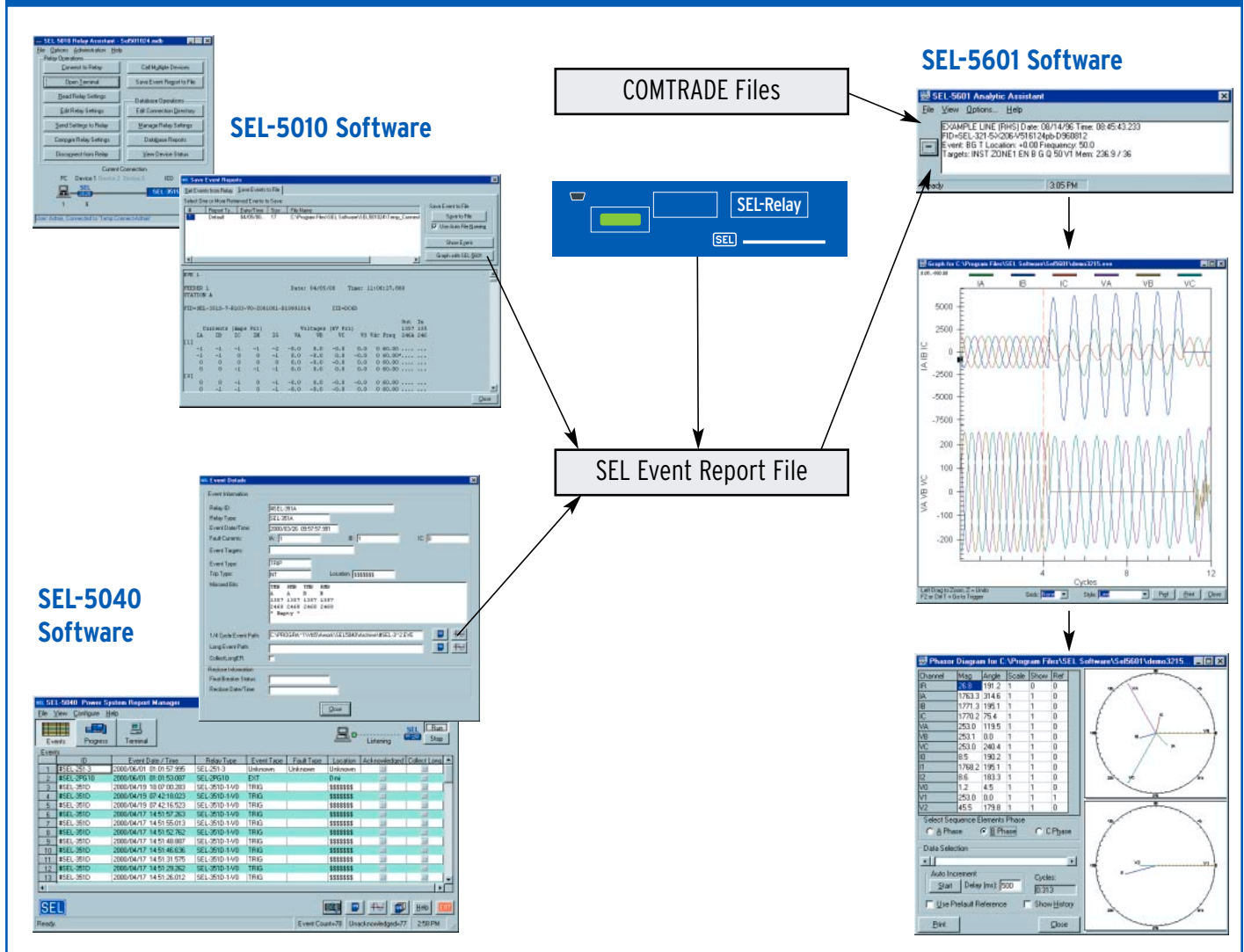


Main Form



Graph Preferences

## Generate Graphs From SEL Software and Other COMTRADE Sources



## Examine Event Reports and Relay Settings

C:\PROGRAM FILES\SEL5601\mmpipt.txt

WARNERVILLE 470 DEV.221/267NA-1(NORMAL) Date: 09/30/97 Time: 22:45:57.080

FID=SEL-321-1-R415-V656112pb-D961108

CURRENTS (pri)			VOLTAGES (kV pri)			RELAY ELEMENTS		OUT	IN
IR	IA	IB	IC	VA	VB	VC			
0	-187	58	130	-114.1	-4.1	118.0	.....	.46.	
-1	-157	-17	173	-78.1	-55.0	133.1	.....	.46.	
-1	-103	-89	191	-30.7	-97.7	128.2	.....	.46.	
-1	-34	-148	180	21.6	-125.2	103.6	.....	.46.	
-2	41	-184	140	70.7	-134.1	63.4	.....	.46.	
-2	109	-192	80	108.6	-122.1	13.5	.....	.46.	
-2	161	-170	7	130.7	-92.0	-38.5	.....	.46.	
-1	188	-124	-66	132.0	-47.5	-84.6	.....	.46.	
-2	186	-59	-130	114.2	4.0	-117.9	.....	.46.	
-2	156	16	-174	78.2	54.9	-133.1	.....	.46.	
-2	102	88	-192	30.8	97.6	-128.3	.....	.46.	
-2	32	146	-181	-21.5	125.1	-103.7	.....	.46.	
-1	-42	182	-142	-70.6	134.1	-63.5	.....	.46.	

Print Close

Event Report Screen

Settings from C:\PROGRAM FILES\SEL5601\mmpipt.txt

Event: AG Location: -10.59 Frequency: 59.9

Targets: EM V1 Mem: 124.4 / 189

GROUP 1

RELID =97055042

TRMID =WARNERVILLE 470 DEV.221/267NA-1(NORMAL)

Z1MAG = 6.87 Z1ANG = 80.30 Z0MAG = 21.95 Z0ANG = 80.30

LOCAT = Y LL = 74.48 CTR = 240.0 PTR = 2000.0

PMH02 = 3 GMH02 = 3 QUAD2 = N

DIR1 = F DIR2 = F DIR3 = R DIR4 = F

Z1P = 5.60 Z2P = 8.30 Z3P = 8.30

S0PP1 = 2.00 S0PP2 = 1.00 S0PP3 = 1.00

Z1MG = 5.00 Z2MG = 8.30 Z3MG = 8.30

S0L1 = 2.00 S0L2 = 1.00 S0L3 = 1.00

S0G1 = 2.00 S0G2 = 1.00 S0G3 = 0.50

K01M = 0.729 K01A = 0.00 K0M = 0.729 k0A = 0.00 T = 0.00

E00S = Y 00SB1 = Y 00SB2 = Y 00SB3 = Y

O0SD = 5.00 E00ST = N

X1T5 = 10.00 X1B5 = -1.00 R1R5 = 7.00 R1L5 = -5.00

X1T6 = 12.00 X1B6 = -2.00 R1R6 = 9.00 R1L6 = -7.00 50ABC = 1.00

ELE = N

Z2F = 3.44 S0QF = 0.50 Z2R = 3.54 S0QR = 0.50 a2 = 0.10

E51P = N

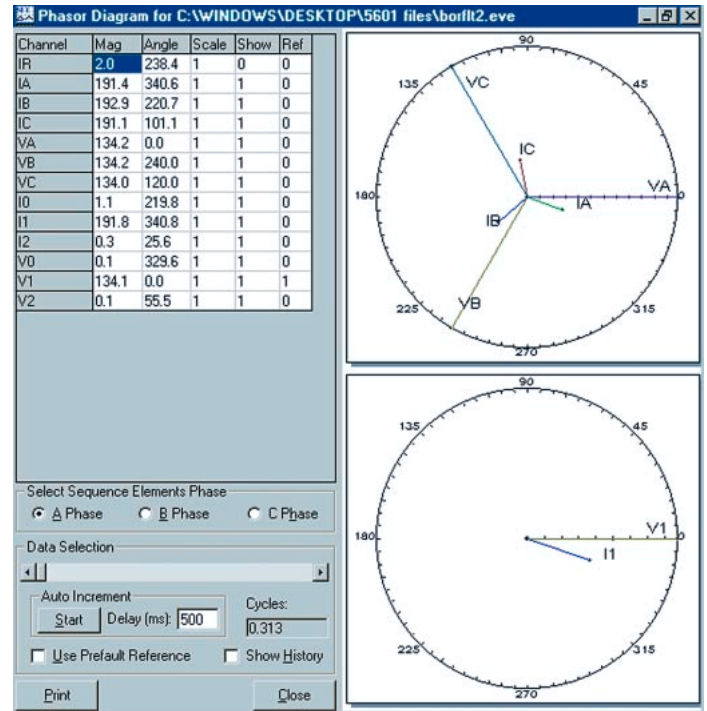
E51N = Y S1NP = 0.60 S1NC = U3

S1NTD = 2.00 S1NRS = N S1NTC = 320F

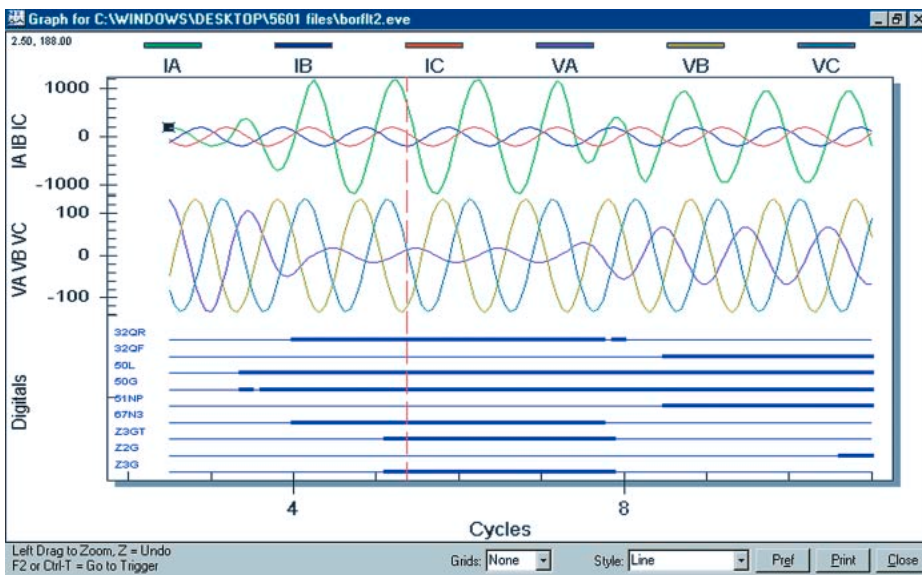
Print Close

Relay Settings Screen

Display and analyze event reports on your PC, print graphical displays, and import graphics to your reports.



Phasor Diagram Screen



Oscillogram Screen

"We find that many people in the electrical industry are apprehensive about the use of highly sophisticated microprocessor equipment due to its perceived programming complexity. This software assists in demonstrating that the use of such equipment is certainly worth the effort."

Craig A. Ripplinger, P.E.  
 Ripplinger Engineering Laboratories

# SEL-5601

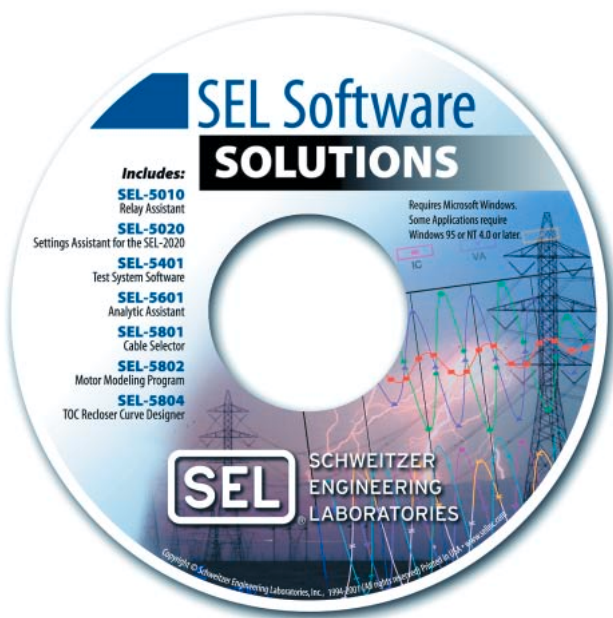
## Analytic Assistant Software

### Specify the SEL-5601

#### SEL Software Solutions CD

Order the SEL-5601 on our *Software Solutions* CD-ROM, and you will also receive demonstration versions of our other popular software applications. Free applications, such as the SEL-5801 Cable Selector program, are also included.

For free demonstration versions of the SEL-5601, or other SEL software applications, visit the software download area of our web site at: [www.selinc.com/softwdwn.htm](http://www.selinc.com/softwdwn.htm).



### Minimum Requirements/Recommendations

- Personal computer with a 486-66 processor  
(Recommended: Pentium)
- Windows® 95, 98 w/16 MB RAM, or Windows NT 4 SP3 w/32 MB RAM  
(Recommended: 64 MB RAM), or Windows 2000 w/64 MB RAM
- CD-ROM drive
- 10 MB available disk space
- Mouse or compatible pointing device

### Commitment to Quality

Schweitzer Engineering Laboratories, Inc. is committed to quality. Our certification to the ISO 9001 quality standard and our ten-year product warranty are examples of this commitment. We encourage and appreciate your feedback about the use of SEL equipment, and we will use this information to continually improve our products and services.



### Contact Us

SEL sales representatives are prepared to assist you. Contact your nearest sales representative, application engineer, or customer service representative at (509) 332-1890. Visit our web site at [www.selinc.com](http://www.selinc.com) for more information.

Copyright © SEL 1997, 1999, 2000, 2001 (All rights reserved) Printed in USA. All trademarks are the property of their respective holders.  
5601fljr 20010219



2350 NE Hopkins Court • Pullman, WA 99163-5603 USA  
Phone: (509) 332-1890 • Fax: (509) 332-7990 • FaxBack: (509) 334-8293  
Internet: [www.selinc.com](http://www.selinc.com) • E-mail: [info@selinc.com](mailto:info@selinc.com)

***Making Electric Power Safer,  
More Reliable, and More Economical***