



SEL-734 Advanced Metering System

Advanced Power Quality and Revenue Metering

Now With More Memory!

- 32 MB on SEL-734
- 128 MB on SEL-734P



Accurate, comprehensive, and reliable metering for new installations and retrofits.

Features and Benefits

Power Quality Monitoring

Record voltage sag/swell/interruption (VSSI), monitor harmonics to the 50th order, capture waveforms, measure flicker, and record sequential events.

Accurate, Bidirectional Metering

Exceeds ANSI C12.20 0.2 and IEC 62053-22 0,2 S accuracy class bidirectional, with full four-quadrant energy metering for generation, interchange, transmission, distribution, or industrial applications.

Standard Software Tools

Easily configure, test, monitor, and retrieve data using acSELEATOR QuickSet® SEL-5030 Software. acSELEATOR QuickSet quickly programs, retrieves, plots, and exports billing data to .HHF or .CSV formats.

Time-of-Use (TOU) Metering

Provides flexible, time-differentiated energy and demand registers, with multiple day types, rates, seasons, and a 20-year programmable calendar. Automation functions include programmable self-reads and peak demand resets.

High-Speed Load Profile (LDP) Data Recorders

Multiple LDP recorders store billing and power quality data in separate records with a maximum update rate of once every three seconds. acSELEATOR QuickSet quickly retrieves, plots, and stores LDP data to a laptop computer or remotely over any communications port.

Transformer and Line-Loss Compensation

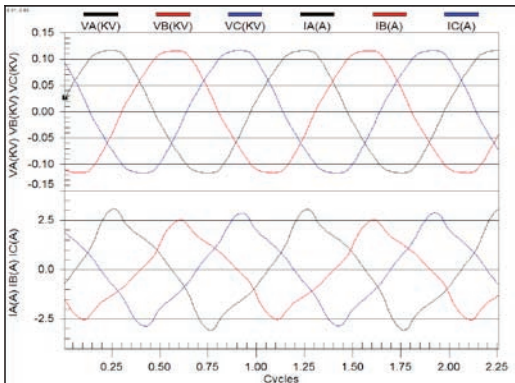
Enter transformer nameplate and line impedance information directly into the meter to automatically compensate for transformer or line losses and move the billing point.

Complete Automation

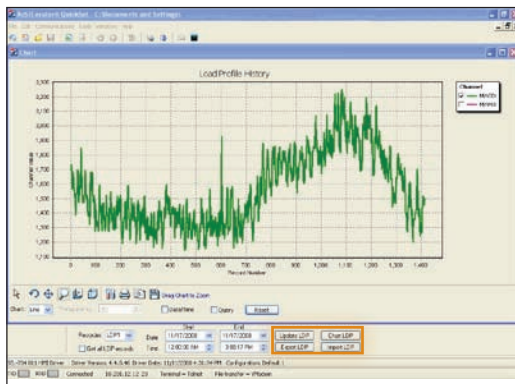
Customize alarms and automate control based on measured load information using advanced SELogic® control equations. Integrate with communications processors for single-point station access.

Industry Standard Compliance

Fully comply with ANSI and IEC standards with voltage and current ranges of: 57-132 V, 132-277 V; CL2, CL20, IEC 1A, 5 A I_{NOM}.



Use high-resolution waveform capture to analyze interruptions, sags, swells, harmonics, and unbalance.



acSELEATOR QuickSet® LDP and .HHF export tool.

Making Electric Power Safer, More Reliable, and More Economical®

Power Quality and Recording Options

The SEL-734 is available with two different power quality and recording feature set levels: standard and advanced. With the advanced power quality and recording option, the SEL-734P can replace a high-end power quality instrument costing thousands of dollars more. This allows economical power quality monitoring at more locations.

Advanced PQ Option

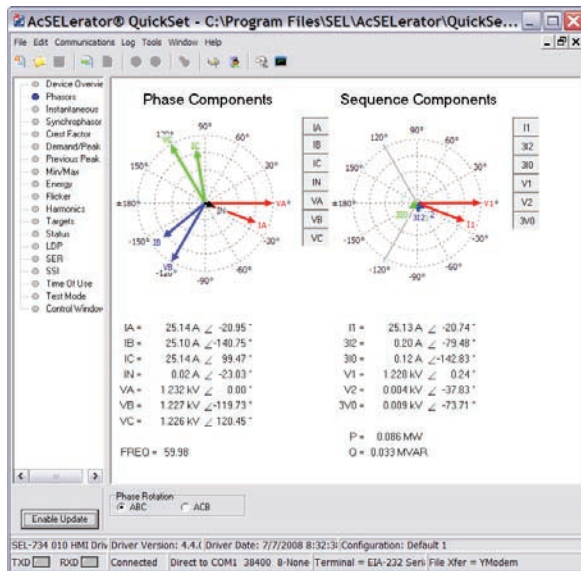
SEL-734P benefits as compared to the SEL-734

Memory	4X
Load Profile Capacity	4X
Harmonic Measurements	3X
Waveform Captures	48X
Flicker Measurement	NEW!
Harmonic Phase Angles	NEW!
Variable Event Report Length	NEW!
Event Report Dial-Out	NEW!
A Lot for a Little!	Only \$500*

* Price adder over SEL-734 price

Simplified Setup and Troubleshooting

- Use ACSELEATOR QuickSet to customize your metering. Set and edit meter configuration, settings, and logic.
- View the HMI screens in ACSELEATOR QuickSet to check wiring connections, phase rotation, and power flow direction.



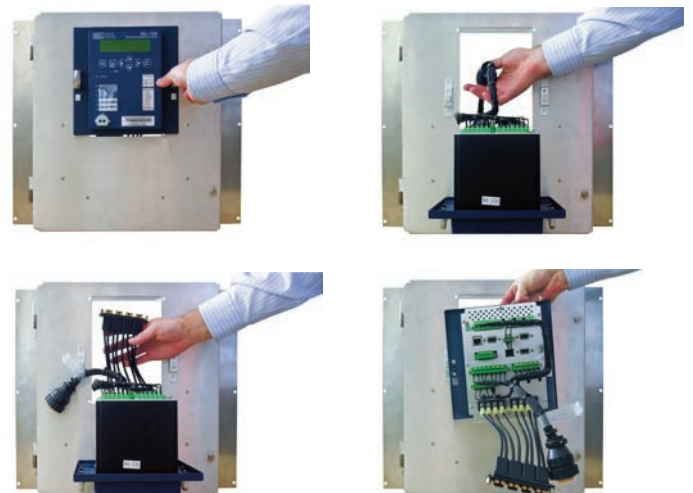
Feature Overview

- Form 5 and Form 9 metering connections
- ANSI C12.20 0.2 and IEC 62053-22 0,2 S accuracy class
- Rack-mount, panel-mount, wall-mount, and NEMA enclosure options available
- Ethernet, EIA-485, EIA-232, telephone modem, and optical probe communications
- Synchrophasor data (IEEE C37.118)
- Enhanced SELogic control equations
- Communications protocols
 - SEL ASCII
 - Modbus[®] RTU/TCP
 - MV-90[®]
 - SEL Fast Operate/Fast Meter
 - MIRRORING BITS[®] communications
 - SEL Distributed Port Switch (LMD)
 - DNP3 Serial LAN/WAN
- Inputs/outputs
 - 2 digital inputs, 3 electromechanical outputs
 - 4 digital inputs, 4 KY outputs
 - 4 digital inputs, 4 electromechanical outputs
 - 4 analog outputs, 4 KY outputs

See model option table for available configurations and options.

Easily Extractable Meter (EXM)

Remove the SEL-734 from service in just seconds with the EXM option. This innovative mounting and wiring solution allows rapid removal while safely shorting connected CTs. Safe, economical, and flexible, this option easily retrofits legacy draw-out meters with a vertical retrofit bezel.



SCHWEITZER ENGINEERING LABORATORIES, INC.

Tel: +1.509.332.1890 • Fax: +1.509.332.7990 • www.selinc.com • info@selinc.com
Pullman, Washington USA

