

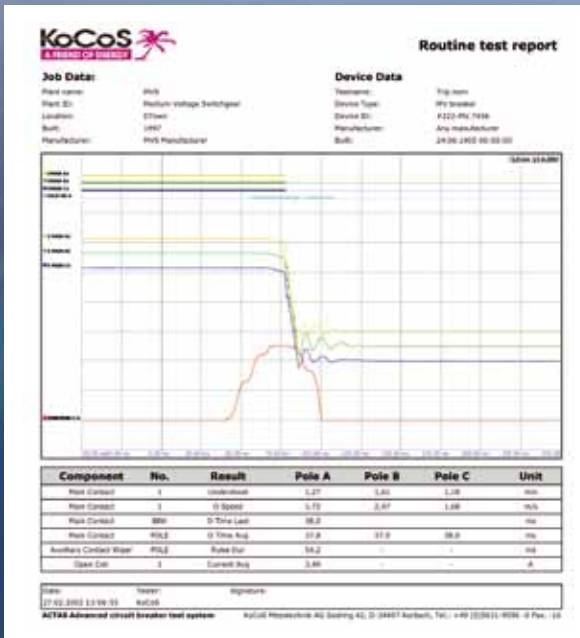
## TEST REPORT

### ➤ Automatic report creation

The programme automatically creates test reports to document test results. In addition to the results of the tests and the characteristic curves of the recorded variables, the test report also includes the technical and descriptive data belonging to a switchgear device or test job.

Test reports are created on the basis of a template which can be customized to meet individual requirements with regard to content and layout.

This makes it easy to produce standardised test reports with a uniform appearance for display on screen or distribution in printed form.



## INTELLIGENT MEASUREMENT TECHNOLOGY

### Made in Germany

#### ■ Measuring and Test Systems for the power engineering sector

- Switchgear Testing
- Resistance Measurement
- Protection Relay Testing
- Digital Fault Recording
- Meter Testing
- Power Sources
- Power Quality Analysis
- Peak Load Management

#### ■ Engineering Services for reliable power grids

#### ■ Optical Metrology for the automotive and semi-conductor industries

#### ■ Automation Technology for manufacturing processes in the semi-conductor industry

# KoCoS

For more information, visit [www.kocos.com](http://www.kocos.com)

**KoCoS Messtechnik AG**  
Suedring 42  
D-34497 Korbach, Germany  
Phone +49 5631 9596-0  
Fax +49 5631 9596-17  
info@kocos.com  
[www.kocos.com](http://www.kocos.com)

**KoCoS**  
A FRIEND OF ENERGY

Technical specifications subject to change without prior notice | © KoCoS Messtechnik AG

SWITCHGEAR TESTING

POWERFUL SOLUTIONS  
FOR SWITCHGEAR TESTING

# ACTAS GO

The new **ACTAS GO** software makes light work of accurate and comprehensive switchgear tests!

KoCoS Messtechnik AG offers a wide range of portable switchgear test systems for assessing the performance of high and medium voltage switchgear devices

Used in conjunction with our switchgear test systems, the new **ACTAS GO** software provides a powerful solution for fast, on-site tests.

[www.kocos.com](http://www.kocos.com)

**KoCoS**  
A FRIEND OF ENERGY

## USABILITY AND ERGONOMICS

### ► Optimised user interface

Particular emphasis was placed on usability and intuitive operation during the development of **ACTAS GO**.

The user interface is easy to understand, with the result that settings can be made and test steps executed with speed and efficiency.

### ► The fast way to results

Once the device under test has been connected to the test system, all that remains to do is to open the relevant test job in **ACTAS GO** and then start the tests directly from the test plan. The entire test procedure, including the switching sequences and all the measurement and recording parameters, are already defined in the switchgear parameters saved beforehand.

Evaluation is performed automatically using the evaluation algorithms and limit values specified in the switchgear parameters.

## TEST PREPARATION

### ► Test preparation - wherever you are

Test jobs can be created offline, allowing you to prepare all the measurements you plan without leaving the comfort of your office. Once you arrive at the measurement location itself, no further settings need to be made.

The well-structured test preparation procedure makes it easy to define test and evaluation specifications, conditions and plant parameters, including the definition of operating sequences, limit values and connections to the test system.

### ► Organised data management

In **ACTAS GO**, switchgear tests are clearly organized in test jobs which contain all the parameters defined by the user. All the data and results generated during a test are also saved in the test job. For the purposes of comprehensive documentation, the test job can also contain additional information describing the plant or switchgear device.

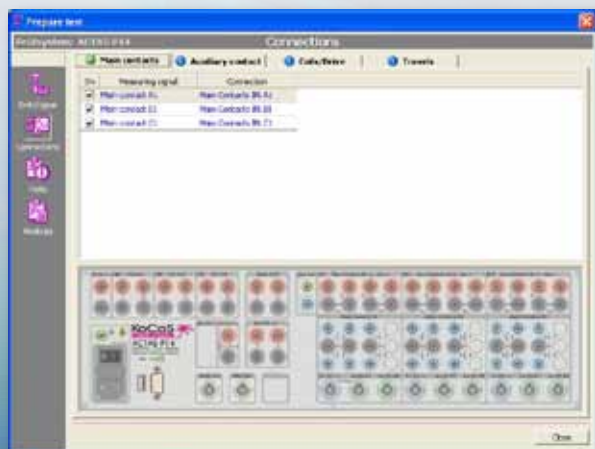
## TEST MONITOR

### ► "Test Monitor" control centre

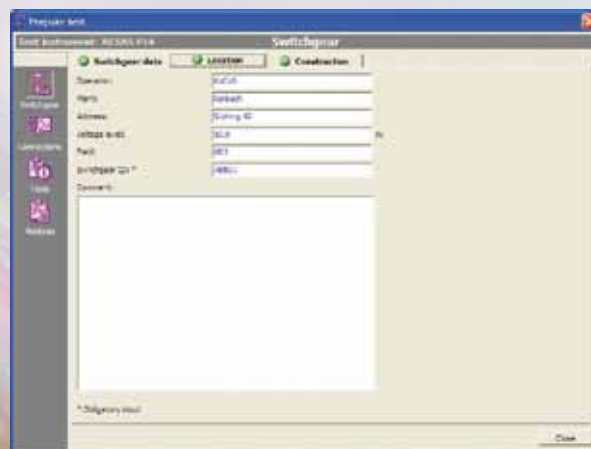
The Test Monitor is the control centre at the heart of **ACTAS GO**. Not only does it run all the necessary test steps, it also analyses tests carried out previously. When a test job is loaded in the test monitor, the user interface displays the job together with the test plan containing all the test steps which have been completed.

### ► In-depth analysis

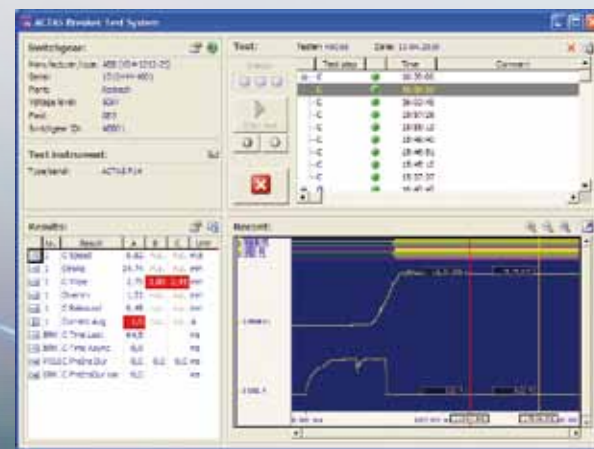
Once a test is started, the issue of control signals and the simultaneous recording of switching operations occur in real time. Using the measured variables and the evaluation specifications saved in the test job, the software automatically determines all the characteristic values and parameters and displays them in a well-organised table of results. One of the highlights of **ACTAS GO** is the graphical display of analog and binary signal characteristics in addition to their numerical representation. Zoom functions and measurement cursors are provided for the manual analysis of signal characteristics.



SPEED



USABILITY



VERSATILITY